

A

APPLICATION TRANSMITTAL

Assistant Commissioner
of Patents
Washington, DC 20231

MAILING CERTIFICATE:
I hereby certify that the above correspondence is
being deposited with the US Postal Service as
Express Mail, Receipt Number: EJ798 JS39 76 US
addressed to: Assistant Commissioner for Patents,
Washington, DC 20231 on the below date.
Julie L. Reed 7/13/99
Julie L. Reed, Reg. No. 35,349 Date

Dear Sir,

Transmitted herewith is the below-titled patent
application.

Inventors: Owen, James Bourret, Mary

Title: "METHOD FOR USING CONTROL SHEETS TO CONTROL SCANNING
DEVICES"

Attorney Docket No.: SLA0193

No. of pages/sheets:

Application: 12 Informal Drawings: 1

Oath and Declaration: 1

The fee is calculated as follows:

Independent claims	Total claims	Fee
2 - 3 included = 0 extra	15 - 20 included = 0 extra	\$760.00

The Commissioner is hereby authorized to charge indicated fees and credit any over
payment to:

Deposit Account 50-0803 in the name of Sharp Laboratories of America.

This form is submitted in triplicate.

Respectfully submitted,

Sharp Laboratories, Incorporated
5750 NW Pacific Rim Blvd.
Camas, WA 98607
(360) 817-7651

Julie L. Reed
Julie L. Reed
Reg. No. 35,349

1c575 U.S. PTO
07/13/99

09/352734

1c515 U.S. PTO
09/352734
07/13/99

METHOD FOR USING CONTROL SHEETS TO CONTROL SCANNING DEVICES

BACKGROUND OF THE INVENTION

5

1. Field of the Invention

This invention relates to control of scanning devices, more particularly to using control sheets to control these devices.

2. Background of the Invention

10

The increased availability of scanning devices in the office environment has led to methods to increase their convenience. Scanning devices include any device that has the capability to scan, such as fax machines, copiers, scanners, etc. One of these methods is the use of control sheets in scanning devices to direct the scanner operation. A control sheet typically includes some type of codes or instructions that can be interpreted by the scanning engine on the scanning device.

15

One example of such a method is found in US Patent No. 5,659,164, issued August 19, 1997. In this method, a control sheet is inserted into the scanning job at the beginning of the job. Several jobs can be stacked together, but the control sheet must be first for any given job. The control sheet has machine-readable coded instructions, referred to as MRI, that direct the scanner in certain operations. The control sheet can direct settings for the scanner, or routing of the scan job to recipients across a network.

20

However, two shortcomings in this approach become apparent upon further study. First, having to place the control sheet first may be inconvenient.

25

66750743330

The user may have forgotten the control sheet until the scanning job has already started, or it may be out of order. The time and processing used to complete that particular scan job has then been wasted. It will have to be repeated with the control sheet in the proper place. Further, for some applications, putting the control information first may be impractical.

Second, use of machine-readable code can be awkward and time consuming. In order for the user to produce control sheets with the machine-readable code, the desired operations must be entered into a converter and the resulting code placed on the control sheet. It would seem far more convenient if the user could type or even hand print the instructions on a control sheet and then use that sheet instead of having to convert it. Furthermore, other applications would be possible if the control instructions are not held to the machine-readable format.

Therefore, a method is needed that allows the control sheets to be placed anywhere within a scanning job, such as a fax, copy or scan job, and that can use formats other than machine readable code.

SUMMARY OF THE INVENTION

An aspect of the invention is a method for controlling scanning devices using control sheets. The method includes the steps of starting the scanning job, locating the control image, processing the control image and
5 creating output in accordance with the control image. Alternative embodiments include creating output prior to processing the control image. The scanning job could be one of image acquisition, such as scanning documents for e-mail or OCR analysis, or one of image production, such as faxing or copying.

In alternative embodiments, the control image could be text, such as a
10 typed or handwritten cover sheet, or an identification badge, or numbers as in an employee number or credit card number. The control image could also be in machine-readable code.

Patent Attorney

BRIEF DESCRIPTION OF THE DRAWINGS

For a more complete understanding of the present invention and for further advantages thereof, reference is now made to the following Detailed Description taken in conjunction with the accompanying Drawings in which:

5 Figure 1 shows one embodiment of a method to control scanning devices with the use of control sheets, in accordance with the invention.

 Figure 2 shows an alternative embodiment of a method to control scanning devices with the use of control sheets, in accordance with the invention.

10 Figure 3 shows an alternative embodiment of a method to control scanning devices with the use of control sheets, in accordance with the present invention.

Patent for the method

DETAILED DESCRIPTION OF THE PREFERRED EMBODIMENTS

Figure 1 shows one embodiment of a process for controlling imaging devices with control sheets. In step 10, the scan job is started. The scan job could be one of several types of jobs. For example, it could be a fax request with the scanned documents to be faxed to several recipients. Other options could be a scanner from which the scanned documents are to be sent across the network to several recipients' e-mail, or a copier with directions on the formatting of the paper output directed by the control sheets.

Scanning jobs that result in an electronic image being acquired as the end result, such as in scanning a document for e-mail, for optical character recognition analysis, will be referred to as image acquisition tasks. Scanning jobs where the electronic image is merely a step before producing a hard copy result, such as copying or faxing, will be referred to as image production tasks.

Control sheets can save considerable amounts of time. If a user has a monthly report that is a compilation of several documents, that user could create one control sheet with all the routing information on it. Every month, the user would just include the control sheet in the stack of documents and the monthly report will get routed appropriately.

Once the documents are scanned, the method locates the control image in step 12. In this manner, the location of the control image is not set to be at the beginning of the job. The capability of locating the control image is provided at the scanning device, alleviating the problem of out of order or forgotten control sheets. Also, for some applications, which will be discussed in more detail later

in the discussion, it may be easier to process the information from the control image after the scanning of the documents is completed.

For the example in Figure 1, the control instructions are processed prior to creating the output. In either step 12 or step 14, the decoding of the instructions at step 18, may be included. Decoding the instructions may be done immediately upon location of the image, or at the point when the instructions are going to be executed. There is no limitation in the invention as to when this step occurs. Finally, in the example of Figure 1, the output is created in step 16 in accordance with the control instructions.

In the example of Figure 2, an alternative embodiment is disclosed. The first two steps of the process are the same as those in Figure 1. However, in this case the output is created prior to the control instructions being processed. Again, as was discussed relative to Figure 1, the decoding step 18, can be performed either as part of step 12 or as part of step 14.

In this example, as mentioned above, it may be more practical to produce the output prior to processing the control instructions. For example, it has become common for companies to track use of copiers shared by several departments so the overhead for the copier can be divided fairly among the departments.

The user would scan their documents in using the copier and create the output. The control image would then be something like an identification card that the employee could lay on the platen. The copier would then process the control instructions, comprising of the employee's name and possibly their

department, and then charge that job to that department. Other examples could include credit card images used to bill copies at copy shops, or other forms of user identification. These examples are not restricted to the method as shown in Figure 2, but are equally applicable to the methods of Figure 1, but are merely
5 used to further explain the alternative embodiment.

A second alternative embodiment is shown in Figure 3. In this embodiment, two different types of control sheets are used. For example, a first control sheet could be a set of directions to operate the scanning device. In this embodiment, the job is started at step 20. The first control image, which could
10 be the directions given in the above example, among other things, is located at step 22. Again, as with the examples of Figures 1 and 2, the image of the control sheet can be processed to decode the instructions at this point or just prior to processing, both referred to as step 32. The first set of control instructions is processed at step 24.

In this example, the first set of control instructions is assumed to be the directions for operation of the scanning device. However, this is not intended to limit the application of the invention. The two sets of control images could be inserted into the scanning job simultaneously, or other options for the control images could be used first. However, for discussion purposes, the first control
15 sheet will be assumed to be the operating instructions. The output would then be produced in step 26.

After creation of the output, the process could then move to step 28 and locate the second control image. The second control image could be an

identifier for the user, a credit card number, etc. The second control image is then processed. Again, similar to the other instances of the control image decoding, it could be done as part of the location step or as part of the processing step.

5 As mentioned above, the order of the types of control sheets could be reversed. Alternatively, they could be inserted simultaneously. For example, the first control image could be the credit card or identification image. This is then processed and that allows the second control image to be processed, which is the operating instructions for the scanning device.

10 Other examples of control instructions could be network routing directions, phone numbers for faxing documents, settings for the scanner or copier, such as to perform optical character recognition (OCR), create sorted, stapled or duplex copies, etc. The format of the control instructions can vary as well, within application of the invention.

15 If the control instructions are in the form of machine-readable code, it will be fairly simple for the scanning engine to locate and decode the control instructions. However, as previously mentioned, this could be inconvenient. The control instructions could be typed or written on the control sheet. The scanning device would then have the capability to perform OCR analysis on the control
20 sheet and parse the instructions into machine instructions for operating the device. Typically, some type of registration mark or other identification would have to be made on the control sheet to separate it from the other pages of text in the scanning job.

The method described in US Patent No. 5,659,164 describes OCR as one of the operations performable by the scanning device. However, it does not mention OCR analysis of the control sheet itself, only as one of the operation on the scanned documents. This could even be extended to recognize hand written instructions, much as certain devices can be 'trained' to recognize handwriting, such as the PalmPilot™. Additionally, the analysis could include analyzing numbers such as credit card numbers, or text as in identification badges, as mentioned above.

Thus, although there has been described to this point a particular embodiment for a method for controlling a scanning device with control sheets, it is not intended that such specific references be considered as limitations upon the scope of this invention except in-so-far as set forth in the following claims.

5
10
15
20
25
30
35
40
45
50
55
60
65
70
75
80
85
90
95
100

WHAT IS CLAIMED IS:

1. A method for controlling scanning devices using control sheets, comprising the steps of:

- a) starting an imaging job;
- b) locating a control image within said imaging job;
- c) processing control instructions from said control image; and
- d) creating output in accordance with said control instructions.

2. The method as claimed in claim 1 wherein said scanning job is an image acquisition task.

3. The method as claimed in claim 1 wherein said scanning job is an image production task.

4. The method of claim 1 wherein said control image is in machine-readable format.

5. The method of claim 1 wherein said control image is text.

6. The method of claim 1 wherein said control image is numbers.

7. The method of claim 1 wherein said method includes the steps of locating a second control image and processing that control image.

8. A method for controlling imaging devices using control sheets, comprising the steps of:

- a) starting an imaging job;
- b) locating a control image within said imaging job;
- c) creating output for said imaging job; and

d) processing control instructions from said control image and using said control instructions for managing said output.

9. The method as claimed in claim 8 wherein said scanning job is an image acquisition task.

5 10. The method as claimed in claim 8 wherein said scanning job is an image production task.

11. The method as claimed in claim 8 wherein said scanning job is an image production task.

12. The method of claim 8 wherein said control image is in machine-readable
10 format.

13. The method of claim 8 wherein said control image is text.

14. The method of claim 8 wherein said control image is numbers.

15. The method of claim 8 wherein said method includes the steps of locating a second control image and processing said second control image.

66740743550

ABSTRACT

A method of controlling a scanning device using control sheets. The scan job is started and the control image is located. The control image is decoded, either as part of the locating step or part of a processing step. The output is
5 created either after the processing step, where the output is created in accordance with the control instructions decoded from the control image, or prior to the processing of the control instruction.

SECRET

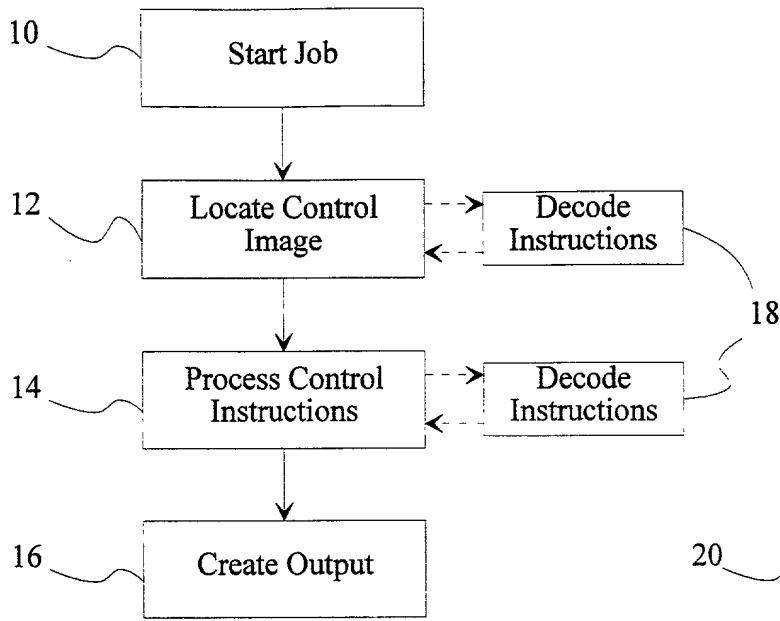


Figure 1

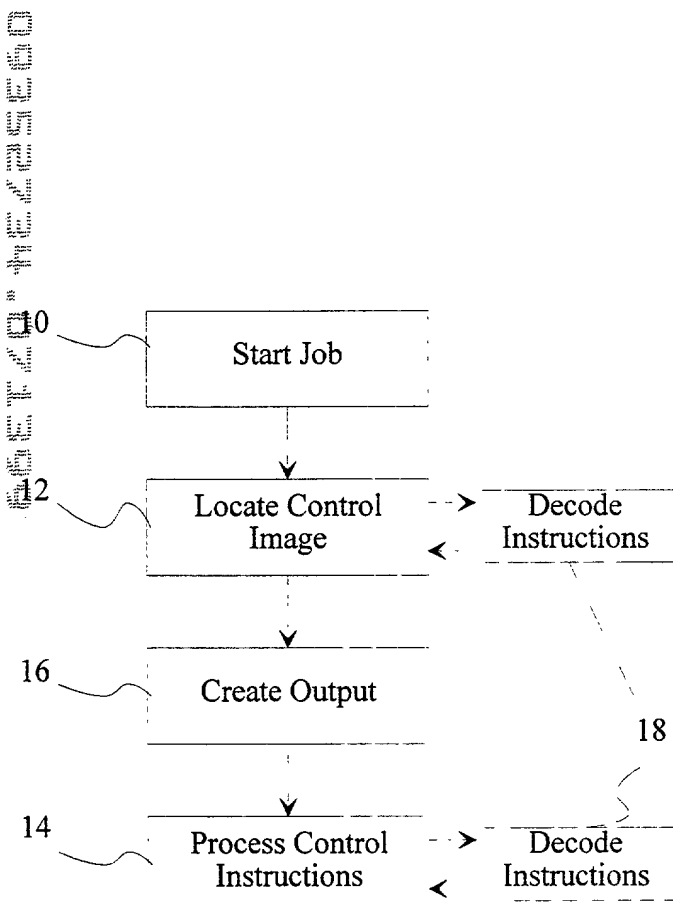


Figure 2

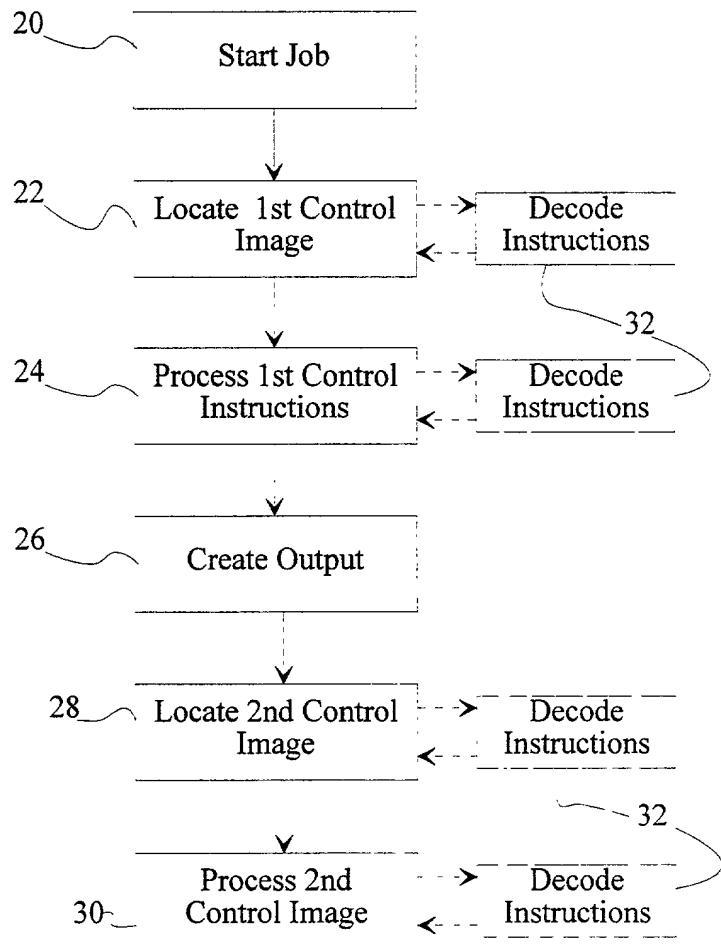


Figure 3

ACCEPTED FOR PUBLICATION



ATTORNEY'S DOCKET NO.

SLA0193

**APPLICATION FOR UNITED STATES PATENT
DECLARATION AND POWER OF ATTORNEY**

As a below named inventor, I declare that my residence, post office address and citizenship are as stated below next to my name; that I verily believe that I am the original, first and sole inventor if only one name is listed below, or an original, first and joint inventor if plural inventors are named below, of the subject matter which is claimed and for which a patent is sought on the invention entitled as set forth below, which is described in the attached specification; that I have reviewed and understand the contents of the specification, including the claims, as amended by any amendment specifically referred to in the oath or declaration; that no application for patent or inventor's certificate on this invention has been filed by me or my legal representatives or assigns in any country foreign to the United States of America; and that I acknowledge my duty to disclose information which is material to the patentability of this application in accordance with Title 37, Code of Federal Regulations, section 1.56;

I further declare that all statements made herein of my own knowledge are true and that all statements made on information and belief are believed to be true, and further that these statements were made with the knowledge that willful false statements and the like so made are punishable by fine or imprisonment, or both, under section 1001 of Title 18 of the United States Code, and that such willful false statements may jeopardize the validity of the application or any patent issuing thereon.

TITLE OF INVENTION:		
METHOD OF USING CONTROL SHEETS TO CONTROL SCANNING DEVICES		
POWER OF ATTORNEY: I HEREBY APPOINT THE FOLLOWING ATTORNEYS TO PROSECUTE THIS APPLICATION AND TRANSACT ALL BUSINESS IN THE PATENT AND TRADEMARK OFFICE CONNECTED THEREWITH: Julie L. Reed, Registration No. 35,349		
SEND CORRESPONDENCE TO:	Julie L. Reed Sharp Labs of America 5750 NW Pacific Rim Blvd. Camas, WA 98607	DIRECT TELEPHONE CALLS TO:
NAME OF INVENTOR: (1)	NAME OF INVENTOR: (2)	NAME OF INVENTOR: (3)
James Owen	Mary Bourret	
RESIDENCE & POST OFFICE ADDRESS:	RESIDENCE & POST OFFICE ADDRESS:	RESIDENCE & POST OFFICE ADDRESS:
3200 Kauffman Avenue Vancouver, WA 98660	4680 NW Owyhee Ct. Portland, OR 97229	
COUNTRY OF CITIZENSHIP:	COUNTRY OF CITIZENSHIP:	COUNTRY OF CITIZENSHIP:
USA		
SIGNATURE OF INVENTOR:	SIGNATURE OF INVENTOR:	SIGNATURE OF INVENTOR:
		
DATE:	DATE:	DATE:
7-12-99	7-13-99	